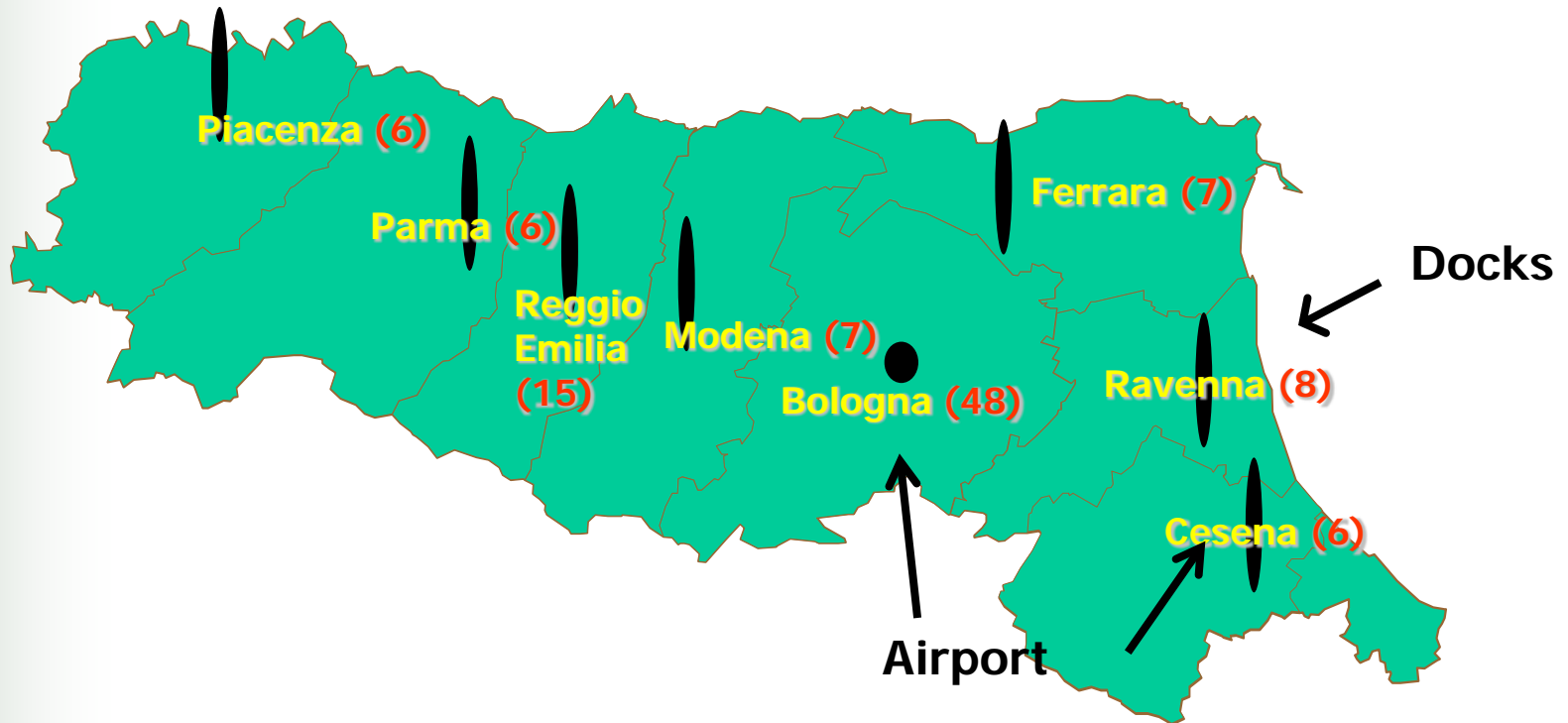


# Plant protection Service Emilia-Romagna Region Agriculture Department





Where we are



Where we are

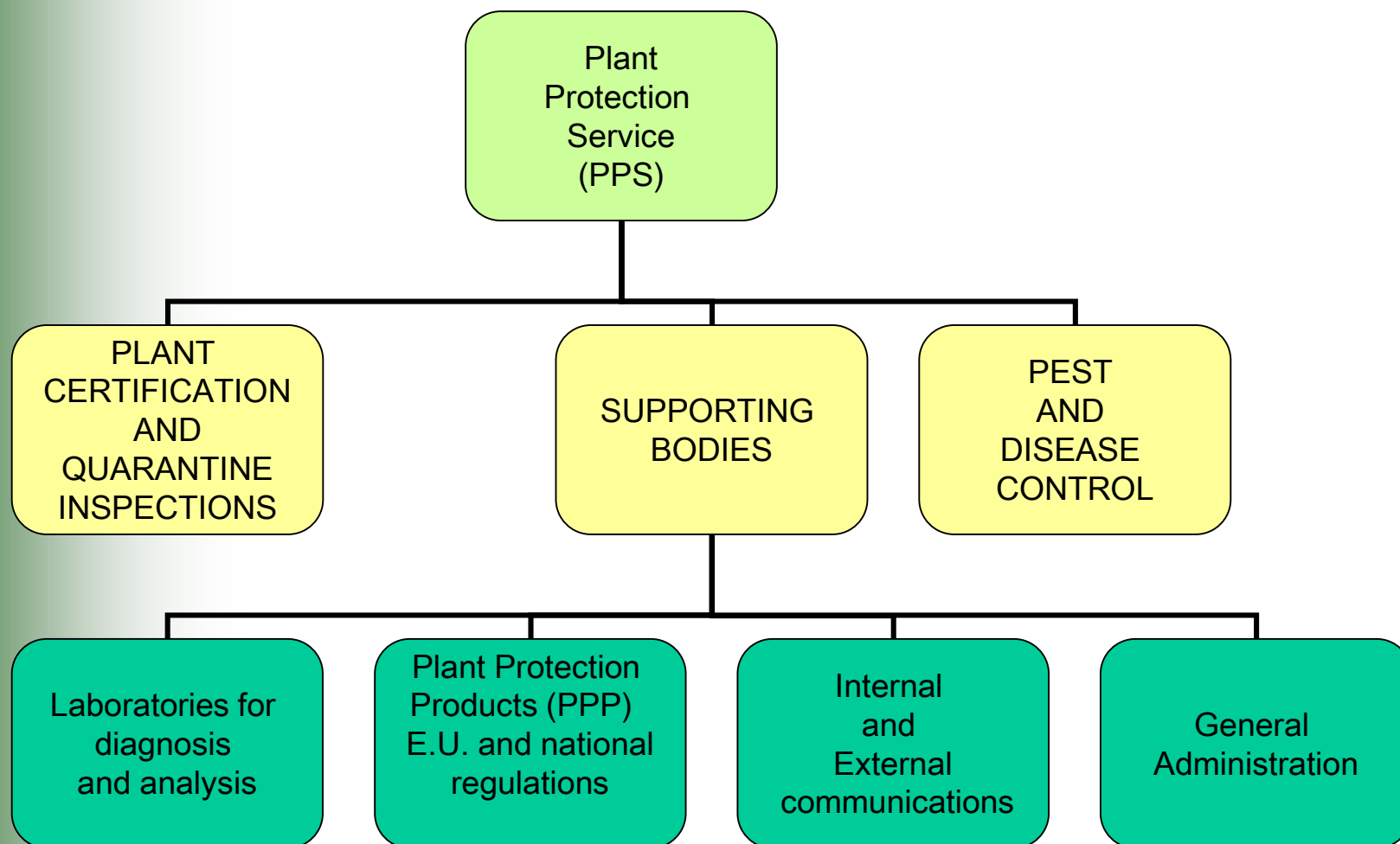
# Mission

**To avoid and contain the spread of noxious organisms and the damages they cause to the crops and environment within a framework of a sustainable and high valuable regional crop production**

# Activities

- Preventive actions for noxious organism with high phytosanitary risk.
- Define innovative pest and disease control strategies compatible with high valuable crop productions and the respect of the environment
- Promote the regional production of a high quality plant multiplication material
- Collaborate in defining regional, national and E.U. phytosanitary rules
- Provide special tools for phytosanitary purposes

# Organisation



- Definition of pest, disease and weed control strategies
- IPM and biological control supervision
- Professional extension activity for the farms
- Warning Service for pests and diseases of the most important crops grown in the region
- Plant protection in forestry and urban areas
- Research and experimentation in plant protection
- Control programmes about the use of plant protection products

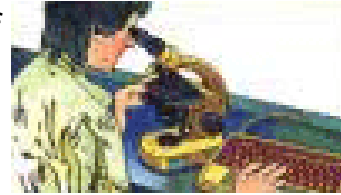


# Integrated Production organisation



Research and experimentation

Presence of  
qualified  
field  
technicians



Relationship with  
other regions



Relationship with  
agrochemical firms



Technical  
assistance  
for farmers



Warning service



Supervision of the  
extension activity





- Application of E.U., national and regional regulations
- Territorial monitoring
- Application of “compulsory control Decrees” for some pest and disease
- Inspections and certifications for import/export commodities
- Authorisations and accrediting (Plant Passports, RUP, Plant production and commercialisation)
- Phytosanitary certifications for plant propagation material



- **WOOD PACKAGING MATERIAL CERTIFICATION (ISPM 15)**
- **AMENITY TREES PHYTOSANITARY MANAGEMENT**



- **NURSERY INSPECTIONS**
- **VIRUS-FREE CERTIFICATION**
- **CERTIFICATION SCHEMES FOR FRUIT PLANT PRODUCTION**
- **INSPECTIONS OF SEED CROPS INTENDED TO BE EXPORTED**



## TERRITORIAL MONITORING AND OFFICIAL INSPECTIONS FOR:

- GRAPEVINE FLAVESCENCE DOREE (GFD)
- POME FRUIT FIRE BLIGHT
- POTATO BACTERIAL DISEASES
- STONE FRUIT SHARKA (PPV)
- KIWIFRUIT PSA



# PSA

- Disease Monitoring
- IPM disease control
- Epidemiological studies
- Forecasting models



CTGW (*D. kuriphilus*)  
Pest Monitoring  
Biological control



A photograph showing three people in a field with snow and fallen leaves, harvesting galls from a tree. One person in a green jacket is in the foreground, another in a red jacket is in the middle ground, and a third in a white jacket is partially visible. They are using tools to collect galls from the branches of a tree. A green semi-transparent box is overlaid on the top left of the image.

*Harvesting dried galls*

A photograph showing two petri dishes on a white surface, containing small, dark, dried galls. The dishes are labeled with 'KIP' and 'made in Japan'. A green semi-transparent box is overlaid on the bottom right of the image.

*Laboratory phase*

A close-up photograph of a person's hand holding a small, clear plastic container over a plant with green leaves and yellowish-green galls. The person is wearing a blue long-sleeved shirt. A green semi-transparent box is overlaid on the bottom right of the image.

*TS release*



BMSB  
(Brown Marmorated Stink Bug)  
Pest Monitoring  
Pest control strategy