



Emerald Ash Borer: Lessons Learned in Ottawa

City of Ottawa
Forestry Services



Outline

- EAB impacts on forest cover and budget
- EAB response strategy
- Lessons learned
- EAB key messages

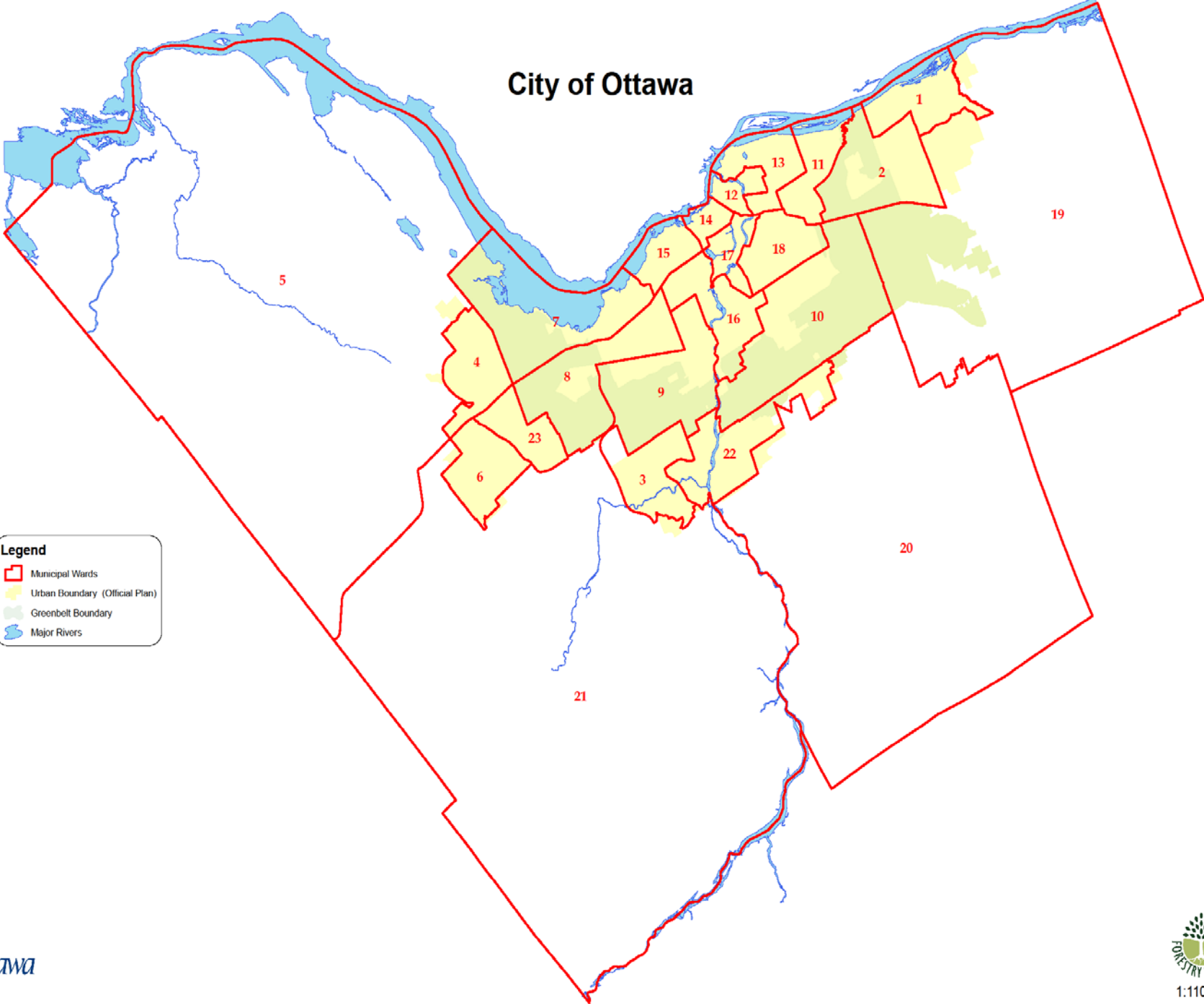
City of Ottawa

- 2796 km², population 900,000
 - Land base mostly rural
- 28% forest cover (20-25% *Fraxinus spp.*)
- 320,000 street and park trees
- Over 10,000 ha of community forests
- 900 parks





City of Ottawa



Legend

- Municipal Wards
- Urban Boundary (Official Plan)
- Greenbelt Boundary
- Major Rivers

Emerald Ash Borer in Ottawa

- July 2008
Discovered in Ottawa by
City staff
- November 2008
Report to Council
- April 2009
First regulated area
- Winter 2010
First street tree removal



Claude St – Before



Claude St - During



Claude St – After



EAB Strategy in Ottawa

- Goal: Slow the spread, manage our forest cover
 - Tree inventory and monitoring
 - Tree planting
 - Tree injection (TreeAzin)
 - Tree removal
 - Wood management and utilization
 - Communication

EAB Strategy by the numbers

- Tree planting (2015)
 - 112,000 trees, 5000 caliper, \$1.3 M
- Tree injection (2015)
 - 2000 trees, \$400,000
- Tree removal (2015)
 - 9000 trees, \$3.5 M
- Woodlot removals (2015)
 - 7000 trees, 20 sites, \$500,000
- Wood processing (2015)
 - \$350,000
- Total annual costs \$5M



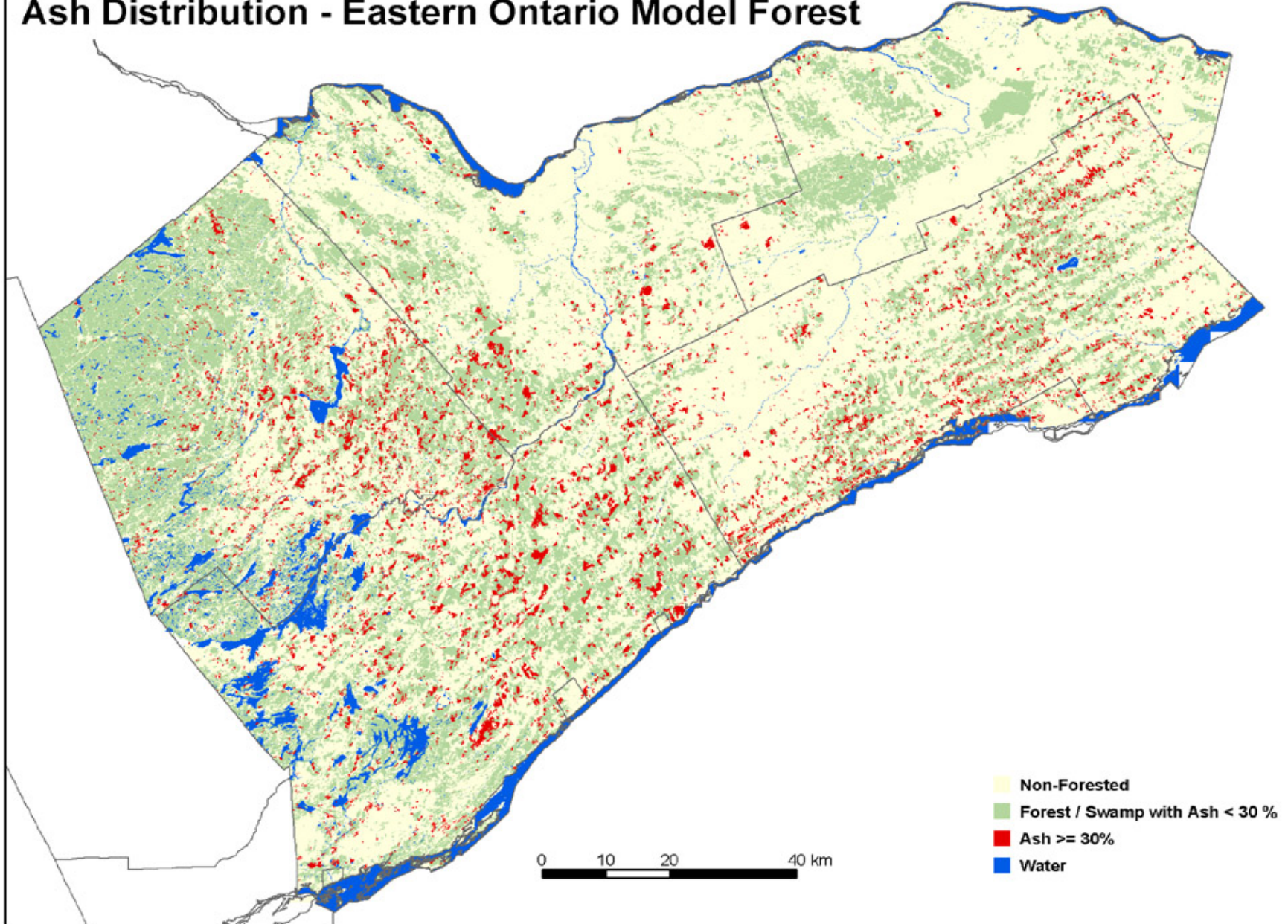
Tree Inventory

- Species, DBH, location
- 165,000 trees inventoried
- Work is ongoing in rural ROW
- Planned future inventory work in natural areas



Forest Inventory - Eastern Ontario

Ash Distribution - Eastern Ontario Model Forest



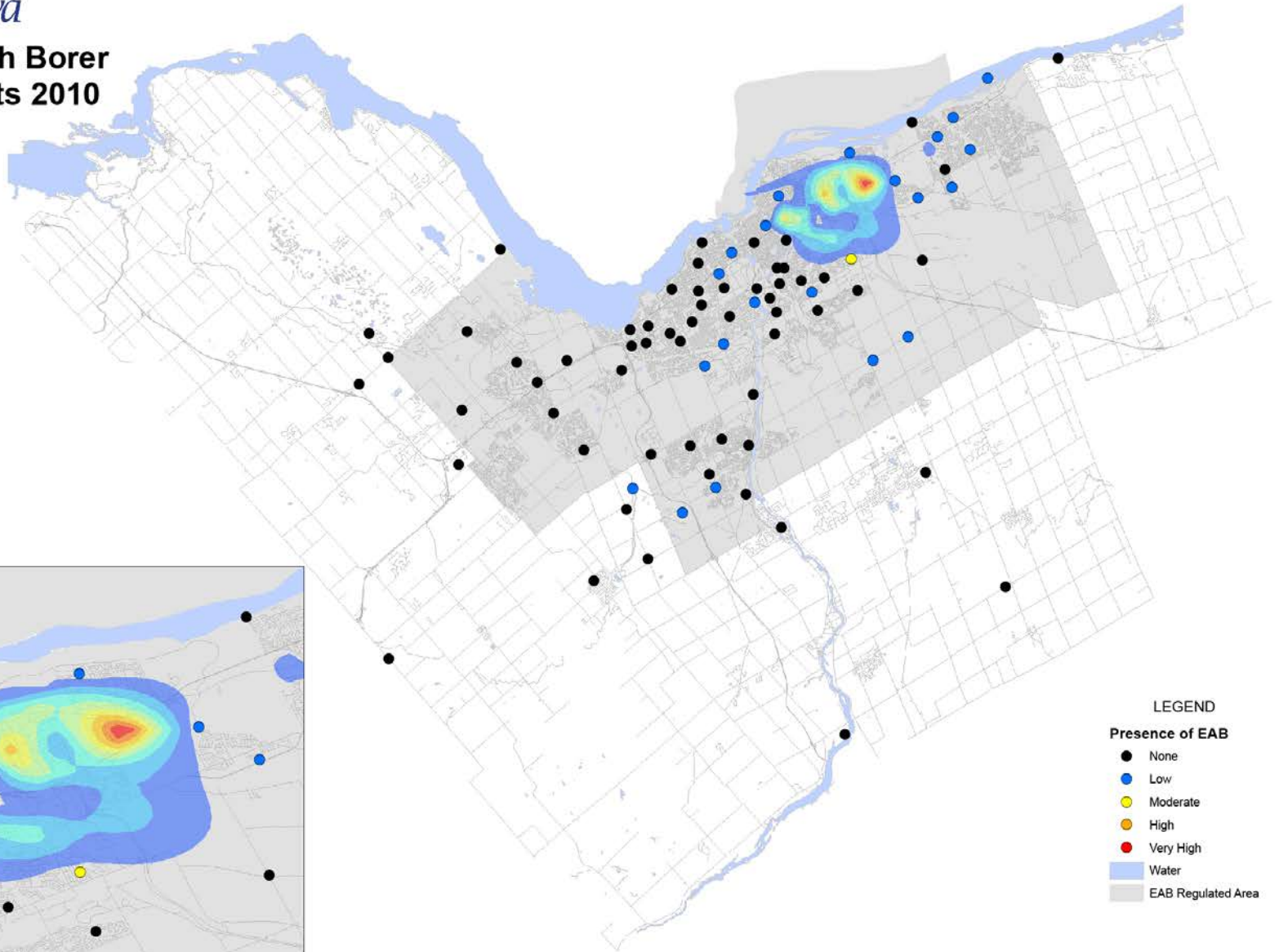
EAB Monitoring

- Work starting 2009 with Canadian Forest Service to evaluate trap types
- Limited use of EAB Branch Sampling Method (CFS)
- Ongoing use of EAB 'green traps' to monitor pest populations



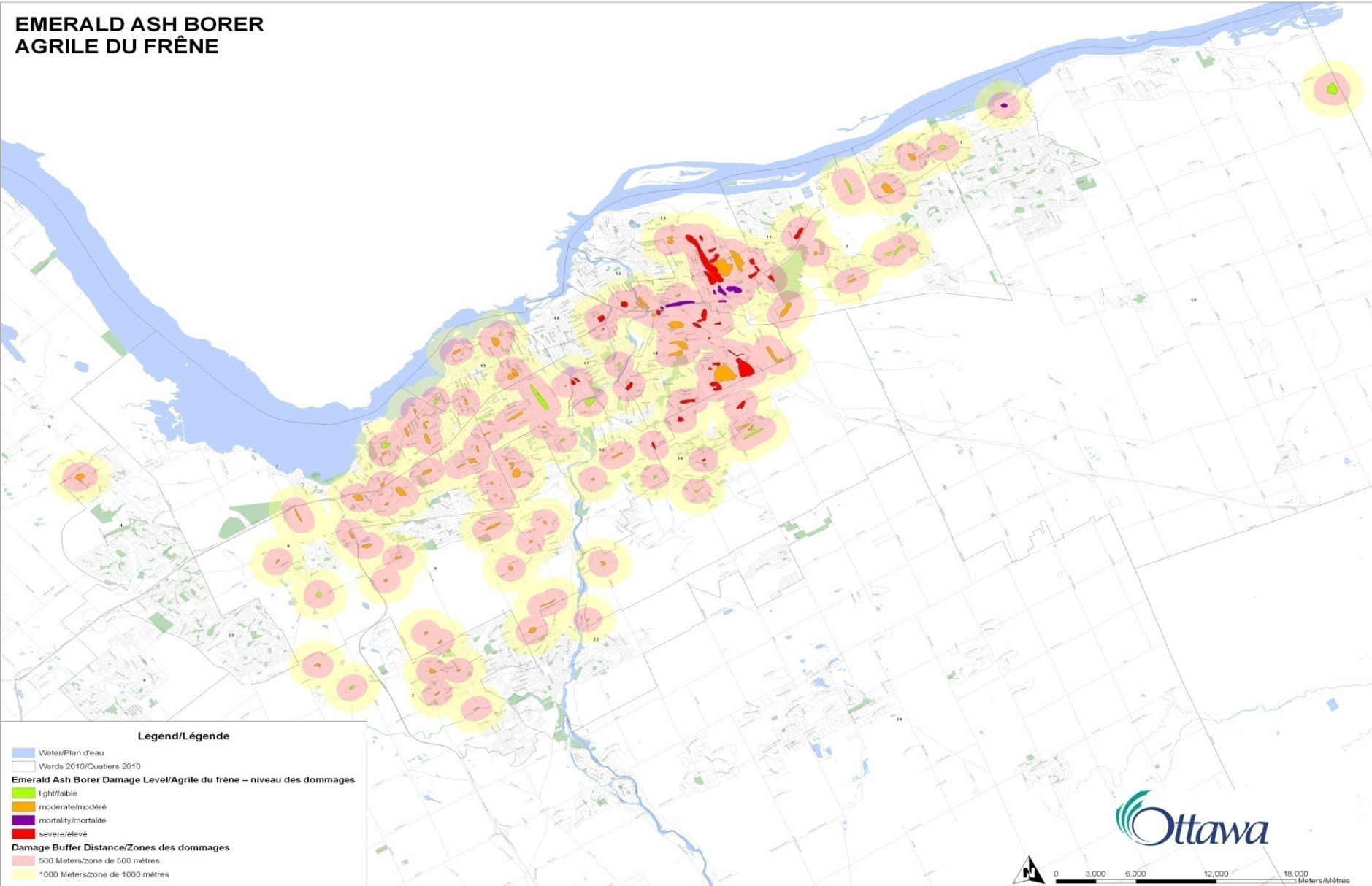


Emerald Ash Borer Trap Results 2010



OMNRF Aerial Mapping

EMERALD ASH BORER AGRILE DU FRÊNE



Tree Planting

- Proactive planting in advance of removal
- Replacement trees following ash tree removal
- 5000 caliper trees per year
- Goal of 125,000 trees per year for all programs



Ash tree injection

- TreeAzin (2000 trees)
- Selected street and park trees
- Annual/Biennial injection required
- Demonstration sites for Ima-jet and Confidor



Ash Tree Removal

32,000 cumulative tree removals streets and parks (2009 - 2016)



Ash Wood Processing



Ash in Urban Woodlots



Ash in Urban Woodlots



Ash in Urban Woodlots



Woodlot Rehabilitation



Communications - Regional Approach

■ Regional Forest Health Network

- Eastern Ontario Model Forest
- City of Ottawa, City of Gatineau, National Capital Commission, Conservation Authorities, Arboretum
- Ontario Ministry of Natural Resources
- Canadian Food Inspection Agency
- Canadian Forest Service
- Mohawk Council of Akwesasne
- L'Agence de mise valeur des forets privée outouaises

Key messages for municipalities

- Evaluate tree inventory and tree planting programs
- Develop partnerships and establish working groups
- Clarify roles and responsibilities for government and partners (monitoring, inventory, wood use, woodlot forestry practices)
- EAB + urban forestry = opportunity
 - EAB raises (urban) forestry profile

Thank you to staff and partners!

